



Strategic Materials, Inc.

Glass Recycling

SWANA, NE Chapter

Laura Hennemann, VP Marketing & Comms



About SMI



We recycle glass to unite the interests of our people, our partners, and our planet.

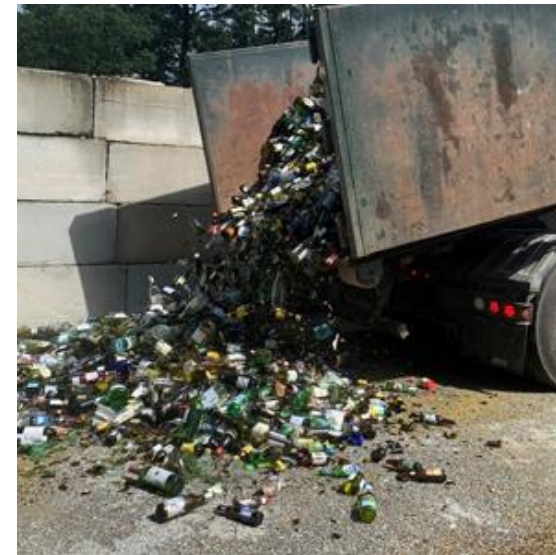


- Largest glass recycler in North America, recycling **3 million tons per year**
- Nearly 50 locations – U.S., Canada, Mexico
- Our customers demand higher amounts of recycled glass to **reduce their manufacturing costs and improve their sustainability through energy reduction and CO₂ emissions savings.**



SMI in Northeast

- SMI South Windsor, CT
- Accepts deposit glass and source-separated
 - HRRRA drop-off program in CT
 - Middleboro, MA municipality aggregation site
- Food & beverage glass
- No MRF glass at this time
- End markets:
 - Container & fiberglass insulation
 - Strong end market demand



Why glass?

- 100% recyclable, endlessly
- Recycled glass displaces mined, virgin materials
- Recycled glass melts at a lower temperature
 - 2-3% energy reduction for every 10% of recycled glass used
 - 1 ton of CO₂ is reduced per 6 tons of recycled glass
- Extends furnace life for container manufacturers
- Energy Star®, LEED® eligibility - fiberglass insulation
- Consumer considerations – chemically inert, ocean-friendly

High value markets:

- Glass containers, fiberglass insulation
- Fillers for carpet, terrazzo, tiles, countertop, concrete
- Light-weight aggregate

Low-value markets: (less desirable)

- Road base aggregate
- Landfill cover



Circular Economy of Glass

Your bottle can be back on the shelf in less than 30 days.



Glass Recycling Myths



CLAIM

FACT

Broken glass cannot be accepted

✓ **We accept broken glass**

Mixed color glass cannot be accepted

✓ **We accept mixed color glass**

Glass must be washed & cleaned

✓ **Labels & organics clinging to glass present no problem**

Glass contaminates other recyclables

✓ **Single-stream contaminates every material in the bin. Proper layout, sequence & processing at the MRF maximizes value for all streams**

Glass cannot be recycled due to China's SWORD policy

✓ **This is not true. Glass is produced and recycled domestically**

Glass has no value and belongs in the landfill, or the value of glass has gone down

✓ **Glass has value and can be maximized with proper process or equipment. Glass value is variable. The amount of garbage has increased, which hurts glass value**

There are no end markets for glass

✓ **End markets include container, fiberglass insulation, highway bead & more. Demand exceeds supply in many areas**

Thank you

Laura Hennemann | lhennemann@smi.com

